

## Product Application

LE1-D

LE1-D Magnetic Starter is mainly applied to circuit of AC 50 or 60Hz, voltage up to 550V for far distance making and breaking circuit frequently starting and controlling motor. It has the features of small volume, light weight, low power consumption, high efficiency, safe and reliable performance etc.



LE1-D09



LE1-D25



LE1-D95

## Product Specification

### LE1-D Series Magnetic Starter

Maximum power AC3 duty(KW)						Rated Current (A)	Code No.			Suitable thermal relay(A)
220V	380V	415V	440V	500V	660V		Type of enclosure	LL (long life)	NL(3) (normal life)	
230V	400V				690V	9	IP42	LE1-D094..	-	LR2-D1312
		4	4	5.5	5.5		IP65	LE1-D093..	-	
2.2	4	4	4	5.5	5.5	12	IP42	LE1-D124..	LE1-D094..	LR2-D1316
							IP55	LE1D123..	LE1-D093..	
3	5.5	5.5	5.5	7.5	7.5	18	IP42	LE1-D188..	LE1-D124..	LR2-D1321
							IP55	LE1-D185..	LE1D123..	
4	7.5	9	9	10	10	25	IP42	LE1-D258	LE1-D188..	LR2-D1322
							IP55	LE1-D255	LE1-D185..	LR2-D2353
5.5	11	11	11	5	15	32	IP55	LE1-D325..	LE1-D255	LR2-D2355
7.5	15	15	15	18.5	18.5	40	IP55	LE1-D405..	LE1-D325	LR2-D3353
										LR2-D3355
11	18.5	22	22	22	30	50	IP55	LE1-D505..	LE1-D405..	LR2-D3357
										LR2-D3359
15	22	25	30	30	33	65	IP55	LE1-D655..	LE1-D505..	LR2-D3361
18.5	30	37	37	37	37	80	IP55	LE1-D805..	LE1-D655..	LR2-D3363
										LR2-D3365
22	37	45	45	55	45	95	IP55	LE1-D955	LE1-D805..	LR2-D3366
25	45	45	45	55	45					LR2-D3365

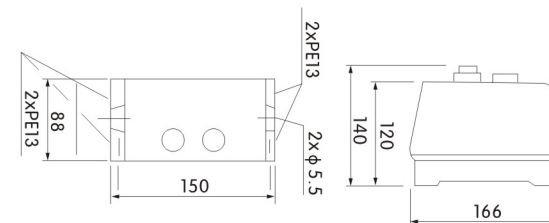
## Characteristic

LE1-D

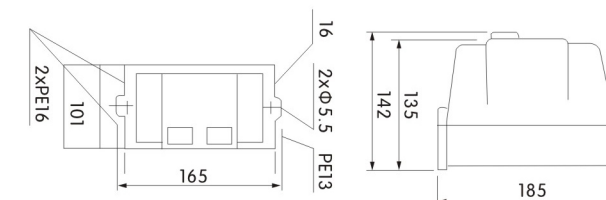
### Standard control circuit voltages

Volts	24	42	48	110	220/330	230	240	380/400	400	415	440
50/60Hz	B7	D7	E7	F7	M7	P7	U7	Q7	V7	N7	R7

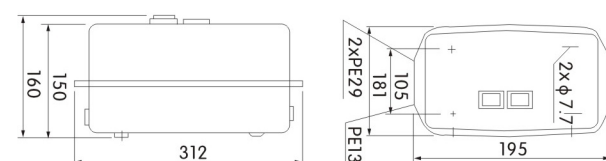
### Utlne and Mounting Dimension



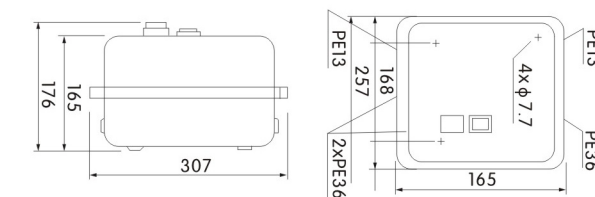
LE1-D09, D12, D18



LE1-D25, D32

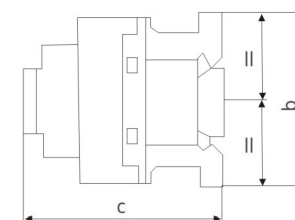


LE1-D40, D50, D65



LE1-D80, D95

### Utlne and Mounting Dimension



### PG Series Adjustable Residual Current Breaker

Type	b	c
09	76.6	87
12	76.6	87
18	76.6	87
25	76.6	94
32	76.6	94
38	76.6	94
40	127	116
50	127	116
65	127	116
80	127	123.8
95	127	123.8
115	158	132
150	158	132