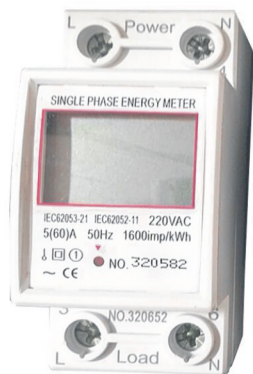


## Product Application

## Din Rail Digital & LED Display Multi-function Watt Hour Meter

DDS3666 Single-phase Watt-Hour Meter(Rail), adopts specialized LSI, the device typifying new periphery component, simple structure, high reliability, low power consumption, long life etc, is suitable for the single-phase AC active electric energy with rated frequency of 50Hz, The performance is in conformity with the technical requirements for single-phase Electronic Watt-hour Meter stipulated in GB/T 17215.321-2008 Class 1 and 2 Static AC active Watt-hour Meter standard IEC62053-21 IEC62052-11.



## Function Features

- Measure active electric energy, no adjustment needed for long-term operation;
- Adopt the special chip of measurement ADE7755;
- Adopt the latest imported electric energy special integration circuit, greatly improved dynamic working range of Meter; to make the ability of actual overload up to over 10 times;
- Have good mistake linearity in the range of 5% I<sub>b</sub> ~ I<sub>max</sub>;
- Few periphery components, simple structure, low power consumption;
- Adopt high reliability and long life electronic components, so the meter assumes feature of high reliability and long life.

## Main Technical Data

Rated Current (A)	1.5 (6), 2.5 (10), 5 (30), 10 (40), 10 (60), 15(60), 20 (80), 30 (100)
Rated Voltage (V)	220 / 240
Rated Frequency (Hz)	50 / 60
Accuracy Class	Class 1 / Class 2
Display Screen	Digital / LED